

Lo Forestalillo

Nº 110 17-09-2007

Catalan Wildfire Status Report



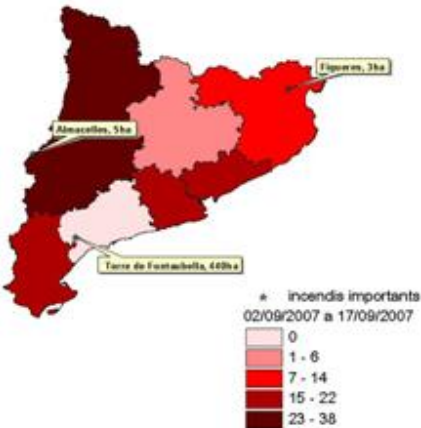
Photo: Wildfire at Priorat (06/09/2007)

What we had

Compared trend from the beginning of year until:

	17/09/2006	17/09/2007
Nº services (VA+VU+VF)	4775	4489
Surface (ha)	4584	2367 (*)

(*) Provisional surface pending validation



Number of services (VA+VU+VF) since 02/09/07 until 17/09/07 and services >2ha.





Description of the situation

Drought Evolution (live and coarse dead fuels availability)

Rainfall between 9th and 15th September has been weak and dispersed. DC Index is stable in the main part of the country, but still doesn't rain in the south, where the fire campaign is still alive and can be problematic. Out of this case, only a little part of the Costa Brava coast still maintains high risk conditions.



Fig. 3. Accumulated (Drought Code index) of 13/09/06.

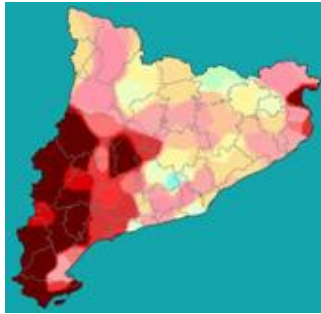


Fig. 4. Accumulated (Drought Code index) of 15/09/07.

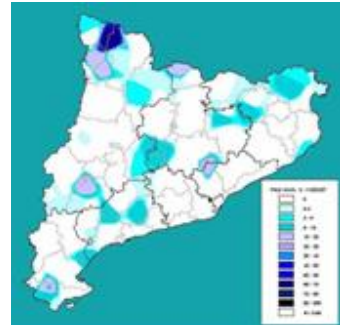


Fig. 5. Map of accumulated precipitation between 9/9 and 15/9.

Fire services trend (VA, VU y VF)

During the last week, the RET has accumulated a major number of services; forestry services with major surface affected have taken place in RETE. VF services have been concentrated in dry areas and as we can see in the DC map, areas with high risk are the same which accumulate the major number of services.

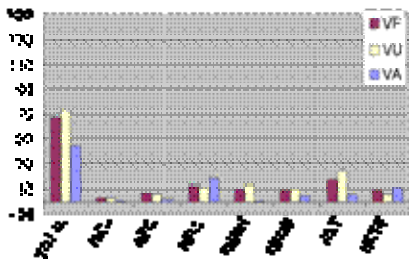


Chart 1. Total services and region services according to the type of vegetation involved, for the last week 02/09/07 to 17/09/07.

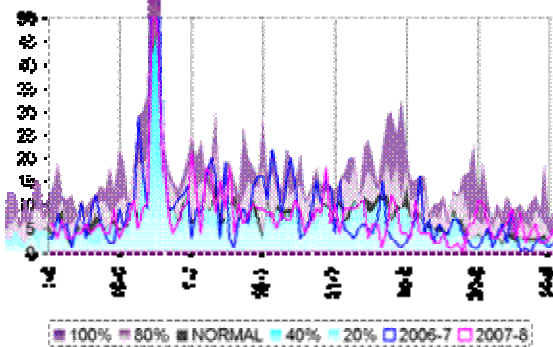


Chart 2. Mbs13 (services of forest vegetation) from 01/06/07 until 15/09/07, compared with the same period in 2006/7. It also compares the developments in the years with the number of normal services (gray, the percentiles 50 per cent), lower than normal (blue) and maxima (lilac) for the last 5 years.



Per regions

REG

La regió continua humida i poc o molt les precipitacions dels darrers dies l'han refrescat parcialment. Tot i així, cal no treure l'ull del litoral empordanès, on la tipologia de vegetació i el règim de vents, fan que el combustible entri en disponibilitat ràpidament.

Què es preveu Els propers dies ens creuarà un front que ens durà vents de nord. De cara als dies 19 i 20 s'espera un episodi de vents de component NW.

REMN

Les precipitacions i humitats elevades dels darrers dies marquen l'escassa activitat. Seguim amb absència de serveis destacats.

Què es preveu Els propers dies les marinades continuen mantenint les humitats al litoral incloses les hores centrals del dia. Les precipitacions dels dies 17 i 18 no han afectat a la regió.

REMS

Encara que les darreres pluges pràcticament no han tocat la regió, l'índex de sequera en reflexa l'escassa activitat. Seguim amb absència de serveis destacats.

Què es preveu Els propers dies les marinades continuen mantenint les humitats al litoral incloses les hores centrals del dia. Les precipitacions dels dies 17 i 18 no han afectat a la regió.

REC

El darrer episodi d'inestabilitat (17/09) ha comportat precipitacions a la meitat nord de la Regió, que amb tot continua presentant índex de sequera importants per l'època.

Què es preveu Episodi de vent amb la retirada del pas frontal que ens va afectar el 17 i que es podria perllongar fins el 19, però perdent força intensitat. No es descarten ignicions per llamps de l'episodi d'inestabilitat del 17 a la meitat nord de la Regió.

RETE

Caldrà estar alerta durant l'episodi de vent de mestral dels dies 19 i 20, i més encara tenint en compte que la inestabilitat pel pas de front dels dies 17 i 18 no ens ha deixat valors de pluja importants al sud.

Què es preveu Es possible que de nou hi hagi dies de no recuperació d'humitats. Com l'episodi de pluges del 18 i 19 no ha estat molt important la seva distribució i el seu volum, no contribueix al descens de la sequera i encara ens mantindrà la campanya a la regió.

RET

Caldrà estar alerta durant l'episodi de vent de mestral dels dies 19 i 20, i més encara tenint en compte que la inestabilitat pel pas de front dels dies 17 i 18 no ens ha deixat valors de pluja importants al sud.

Què es preveu És possible que de nou hi hagi dies de no recuperació d'humitats. Com l'episodi de pluges del 17 i 18 no ha estat molt important la seva distribució i el seu volum, no contribueix al descens de la sequera o si encara ens mantindrà la campanya a la regió.

RELL

Les darreres pluges a la part nord de la regió han continuat reduint els índex de sequera, però encara continuen essent important al sud de Lleida, on encara són possibles comportaments de foc amb intensitat.

Què es preveu La retirada del pas frontal que ens va afectar el 17/09 comportarà vents de mestral al canal de l'Ebre i ponents a la Plana fins al 19. A més, en els propers dies i en condicions de baixes humitats relatives es podrien donar ignicions per llamps (especialment a les zones perifèriques de les conques internes) corresponents a l'episodi d'inestabilitat del 17.

Grau d'activitat



Baixa



Normal



Mitja



Important



Crítica



Gran incendi

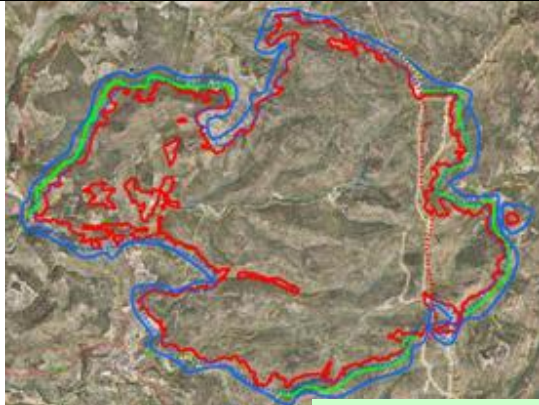







Important information

3.1.- Important Wildfires.

La Torre de Fontaubella (06/09/2007)

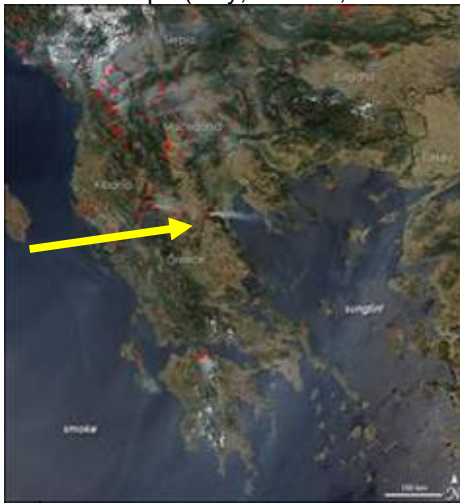
 <div data-bbox="507 1003 821 1153" style="background-color: #e0ffe0; padding: 5px;"> <ul style="list-style-type: none"> Maquinària —— Línia d'aigua MAER Contrafoc Crema eixamplament Eines manuals </div>	<ul style="list-style-type: none"> • Meteorology: In the early hours, a low intense NW wind blew, turning to an east wind at 18h. At the beginning of the fire forest, the conditions were: 30°C, HR lower than 20% and a NW wind about 12,6 Km/h. From entrance of east wind, these meteorological conditions changed 22,9 °C, HR upper than 45% and east wind about 7,2 Km/h. • Behaviour: Since the beginning, at 12:27h, the bent smoke column showed an intensive behaviour with a black colour. It was a surface fire of high intensity and a crown fire. The change of wind increased the humidity, and with the arrival of night, fire changed to a surface fire of medium intensity torching some trees.
<ul style="list-style-type: none"> • Tactics: First of all, we act on the left flank, and then, we act on the queue and the right flank. But the spot fires felt out of the extinction means area and the fire arrives to the bottom of the gully situated on the central part inferior of the perimeter. Lines go from the queue to the head, supported by aerial means. At the head, we decide to do a back fire to reduce its behaviour, and to avoid the passage to the crest with maximal intensity; means can be placed on the crest and go down to the queue. When wind turns, the right flank is the priority, because in case it crosses Castellanes gully, fire will move to La Mola and Serra de Llaberia. The part of head that crosses by the crest is attacked with manual tools and line water. • Extinction means: 24 aerial means, 150 ground vehicles Burned surface: 440ha 	
	
<p><i>Photo Fontaubella Tour, image of the smoke column at 15:28h. The column is broken at certain height, which indicates the posterior change of wind.</i></p>	<p><i>Image of right flank. Realising a burn out from the forestry path, with water support.</i></p>



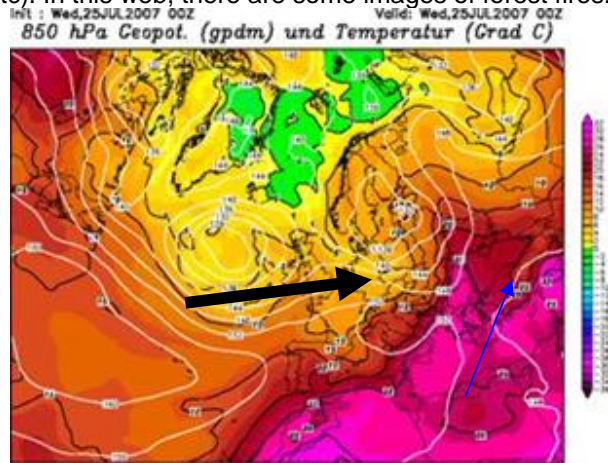
3.2.- Satellite images for the monitoring of forest fires in the world

Internet is a very useful tool where we can find plenty of forestry information. In the next web, we can look up for forest fires at the moment, with satellite images: http://earthobservatory.nasa.gov/NaturalHazards/natural_hazards_v2.php3?topic=fire.

During this summer, communication media have informed about all different forest fires occurred around Europe (Italy, Greece, East Europe, etc). In this web, there are some images of forest fires.



25th July image. Forest fires in Greece, Bulgaria, Macedonia and Serbia. (www.earthobservatory.nasa.gov)

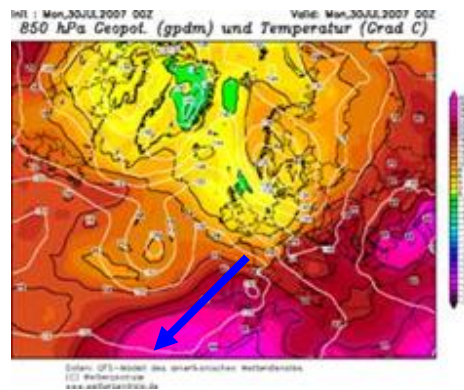


Hot air mass image affecting in Greece and East Europe. (www.wetterzentrale.de)

From 23rd July, a depression crossed Europe from west to east, colliding with a hot air mass situated upon the north of Africa. Because of anticlockwise rotation movement, depression moves to Greece, Bulgaria, etc. Pink area in right image shows hot air mass.



30th July image of forest fire at Canary Island and Tenerife. (www.earthobservatory.nasa.gov)



Hot air mass image affecting at Canary Islands. (www.wetterzentrale.de)

At 26th July, an anticyclone situated on the Atlantic in front of Portugal moved an air mass from the north of Africa to Canary Islands. Right image shows the movement of the air mass caused by anticyclone rotation movement (pink area and blue arrow). In pink area, temperatures are extremely high and humidity is very low during night and day, till the end of this situation.

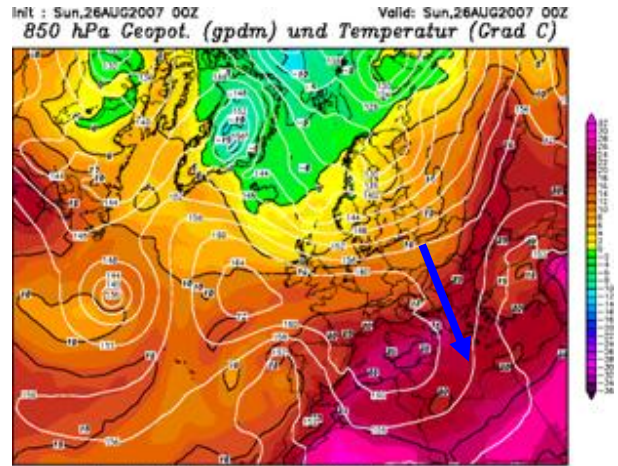




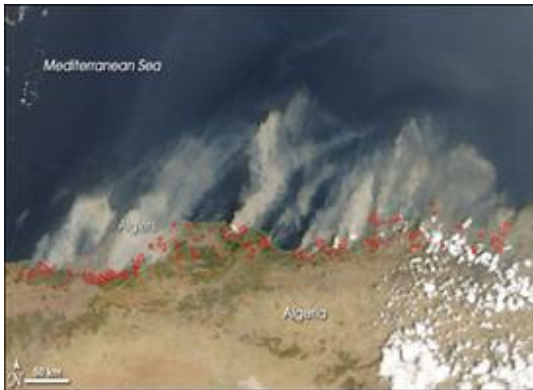
Generalitat de Catalunya
 Departament d'Interior
 Relacions Institucionals i Participació
**Direcció General de Prevenció,
 Extinció d'Incendis i Salvaments**
 Divisió Operativa
GRAF



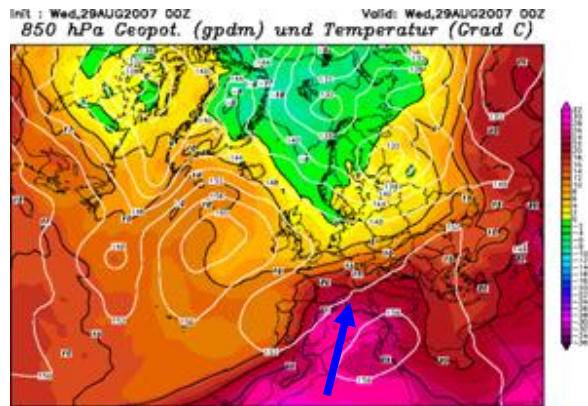
26th August image, Greece.
www.earthobservatory.nasa.gov



Air mass entering to Greece.
www.wetterzentrale.de



29th August image, Algeria.
www.earthobservatory.nasa.gov



Anticyclone affecting North Africa.
www.wetterzentrale.de

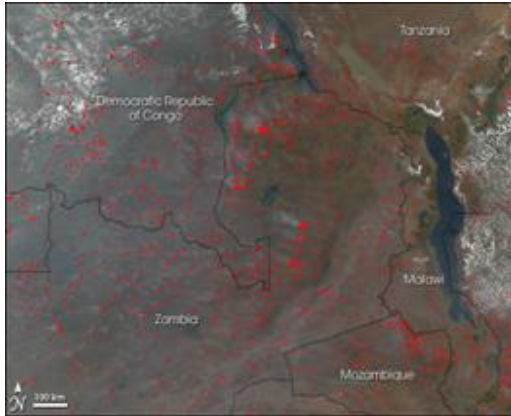
These images show 26th to 29th period when multiple forest fires started in Mediterranean region. Blue arrows indicate general direction of wind; differences between wind directions are caused by clockwise rotation of the anticyclone situated on the Mediterranean.

During the summer, the two air masses situated in the north of Africa and in the south of Europe have moved up and down of latitude depending on depressions movement (crossing from west to east the European continent) and the anticyclones.

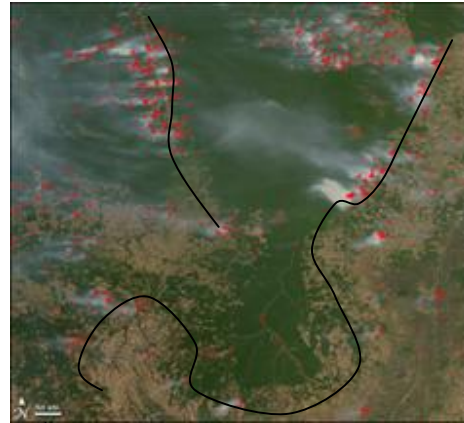




Generalitat de Catalunya
Departament d'Interior
Relacions Institucionals i Participació
**Direcció General de Prevenció,
Extinció d'Incendis i Salvaments**
Divisió Operativa
GRAF



29th Auguts image, Central Africa.
(www.earthobservatory.nasa.gov)



12th August image, Amazonia Rainforest.
(www.earthobservatory.nasa.gov)

Two images, in Africa, traces of pasture fires and hunting areas in the Savanna. In Amazonia, ignition points along communication access and agriculture areas for gaining territory to the tropical forest.

3.3. VII PULASKINADA A MATARÓ.

This year, the traditional "Pulaskinada" has been celebrated coinciding with the 150th anniversary of Mataró fire station. The meeting took place last 15th September in the fire station and then participants moved to the fields where activities took place.

This year there were some new activities for kids as well as usual activities. Participants must pass 4 physical proofs: pulaski's throwing, power saw ability, defense line and rope stretching. One member's team is chosen to carry out two first proofs while last proofs require coordination between all members' team.

After efforts and prize-giving, a meal with all participants took place to celebrate "Pulaskinada Day" and to say goodbye to next year.





Pulaski throwing		
	<p>Pulaski must be thrown as far away as possible, similar to hammer throw.</p> <p>This year there were two types of Pulaski to innovate this proof.</p>	<p>1st classified: GRAF BCN 1 2nd classified: FP 3rd classified: Arenys</p>
Power saw ability		
	<p>This proof consists on sculpting, with a power saw and in the minimum time, a figure on a log. This figure is different for every edition and unknown till the starting of the proof. This year was a farm chicken.</p>	<p>1st classified: Pin i Pon 2nd .classified: Arenys 3rd .classified: Anglesos</p>  <p><i>Year's figure</i></p>
Defense line		
	<p>Depending on ranking in Pulaski throw proof, member's of each team chose a defense line to open. Winner team is that one who arrives before to the finishing line (100 metres), only when defense line has a minimal quality.</p>	<p>1st classified: GRAF BCN 2 2nd classified: Picapedrers 3rd classified: Pin i Pon</p>
Rope stretching		
	<p>Brute force, with some technique, decides the winners of this proof. At the end of eliminatory proofs between teams, the winner team is decided in a final.</p>	<p>1st classified: GRAF BCN 2 2nd classified: Infantil 3rd classified: Anglesos</p>



Num	Team	Pulaski Throw	Power saw	Defense line	Rope
1	FP	40m	21:14	4	8
2	PICAPEDRERS	17.50m	18:00	2	9
3	PINI PON	9.30m	13:03	3	10
4	ARENYS	33.50m	14:03	5	4
m	GRAF BCN1	47m	18:29	6	5
6	GRAF BCN2	33m	18:25	1	1
7	ADF SERRALADA	25m	Desc	Desc	7
8	ANGLESSOS	19.30m	15:40	7	3
9	LPA	25m	23:04	9	6
10	INFANTIL	31.10m	24:21	8	2

3.4. State of emergency in Paraguay because of forest fires.

Numerous forest fires have burned more than one hundred thousand hectares of forest mass and crops in three weeks, in north-east of the country. From last week, Paraguay has been declared as a state of emergency. The National Secretary of Emergencies has sent a thousand of policies and military men to San Pedro department, the most affected region.

Previously, Paraguay's government had requested for help to Argentina, Chile and Venezuela. About fifteen thousand of people have been evacuated from their homes. Forest fire smoke obliged to close the main airport of Paraguay, Silvio Pettirossi, during some hours.



Source: www.elpais.com

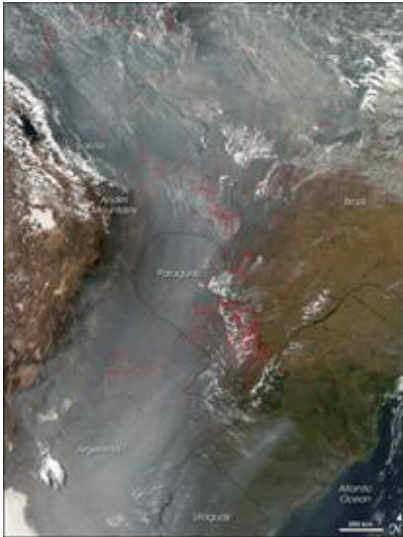
Owners of "haciendas" in Paraguay burn their fields before sowing to get better land conditions. This year, this practise has been carried out during a long drought period that has helped to forest fire propagation. Origin of forest fires are being investigated after some formal complaints related to this agricultural practise.





Generalitat de Catalunya
Departament d'Interior
Relacions Institucionals i Participació
**Direcció General de Prevenció,
Extinció d'Incendis i Salvaments**
Divisió Operativa
GRAF

More than 200.000 hectares of forests and fields have burned in Paraguay, where last Tuesday 5000 focus where registered. Paraguay's government has declared the state of emergency.



Source: www.earthobservatory

